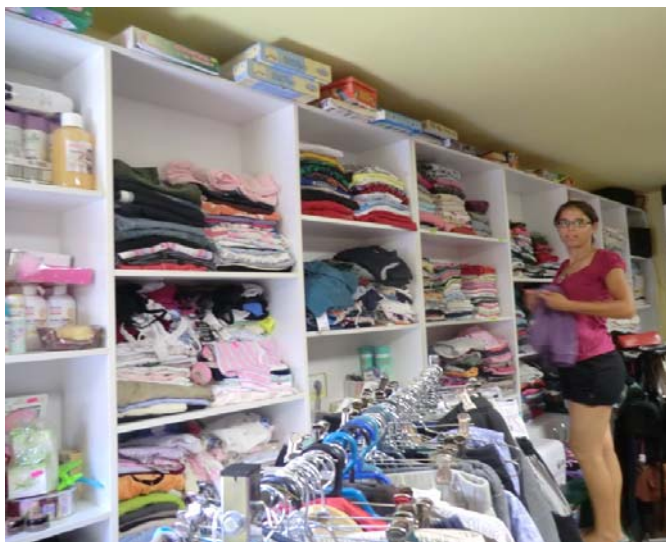




Sunshine Foundation Romania

Annual report 2012

One of our biggest successes in planning for the future of our children and young people has been the opening of the second hand shop at our site in Harman. Thanks to funding from Lloyds TSB Foundation we were able to renovate and fit out a shop unit and provide retail training for our young adults.



The shop was opened in October and so far it has been very well received and supported by the local community in Harman.

The purpose of the shop is to provide supported employment for our young adults with the hope of providing a vital income stream to develop further supported employment initiatives.

Earlier in the year, volunteers from Fintona fundraised to send a lorry of donated items out to Harman. Full to the brim, this load should keep the shop going for a couple of years. The old containers on site have now been renovated, and the roof-space of the primary building floored, to provide much needed storage space for the shop.

While the shop provides an important training ground in employment, not all of our young adults want to work in the shop. Adriana, for example, is now working full time in a local



pizzeria which she loves. As the eldest girl in Casa Irlanda, she is a great inspiration to her younger peers to see that they too can find a job which they love doing.

The children – one of the most significant highlights of the year was getting Lily back living in Casa St Patrick (CSP). She was moved by the authorities to an orphanage for severely disabled children and was highly distressed to have been moved from her home. We never gave up the fight with the authorities and Lily was returned to her rightful home after almost a year.



The children continue to attend school which they love, the transport costs of sending them to three different schools is expensive but vital for their continued development.

Romania, like many other countries has been hit hard by the recession. The cuts to child protection services have had a devastating affect on staff provision at our homes in Harman. With salaries being cut

by up to 25%, it has been difficult to maintain staff who could no longer afford the transport costs out to Harman from the city. The children in CSP have been worst affected by the staff shortages as their routine was turned upside down.

In collaboration with the Romanian authorities, we have had to financially support the employment of a house mother for CSP and a p/t support worker to try and bring stability and routine to CSP. Marie has also provided training to both the support staff and children at CSP to introduce constructive methods in dealing with challenging behaviour.

The children in our Casa St Maria house have had the benefit of consistency of staff and they are all flourishing. Marius has been reunited with his family and is very happy there.

We also identified that the older children and young adults from our supported living apartments in Casa Irlanda also need additional guidance and so a psychologist is providing counselling support to help with their emotional well being.



Some of the older children have been making their own arts and crafts and selling these at various fetes and theatre events. They gain a great sense of pride and sense of achievement from these activities and love the social interaction with the public.



We continue to support our children that have been successfully reunited with their families. Danny and Vasile are extremely happy to be living with their families but their families are quite poor and so we continue to provide them with food parcels and work with other charities to help them with improving their living conditions.

Fundraising

It has been an eventful year of fundraising, helped by introducing new methods to facilitate donations. We set up online fundraising with 'mydonate' and text giving with 'justtextgiving' both of which do not charge us admin fees.



Sincere thanks to all of our donors, both anonymous and known, for their continued support to Sunshine Foundation Romania. Thanks to Lloyds TSB for the much needed grantaid for our social economy project.

Many thanks also to all of the volunteers, local charities, sports clubs, churches, schools and businesses which helped to

make the following fundraising activities a success:

- Coffee morning in Mary Duffy's house, Coalisland
- Clarins celebration of its supported charities
- Big breakfast, Glenravel GFC
- Jumble Sale, Beragh



- Coffee morning in Holy Family Church, Belfast
- NICVA relay team, Belfast marathon
- Bag pack in B&M, Armagh
- Bag packs in B&M, Ballymena (April and December)



- Jumble sale, Glenravel PS
- Bag pack in M&S, Ballymena
- SVP overseas collection, Ballymena
- Fundraising for lorry of donated goods, Fintona



Many thanks also to Nodlaig Keenan who has successfully implemented our gift aid claim to HMRC and who continues to support and guide us with maintaining our finances.

Co-ordinating the work in Romania

A special word of thanks to our co-ordinator Viorel Mares who works tirelessly to ensure that the charitable work of Sunshine Foundation Romania is maintained, continued and developed.

Sunshine Foundation Romania's work is also greatly supported by other charities working in Brasov County in Romania. Special thanks to School Aid Romania and STAR for their continued support.

Independent Examiner

Many thanks to Enda McLernon for carrying out the independent examination of the annual accounts. His continued support and advice is very much appreciated.

Charity Trustees

Marie Williams (Chair), Maire O'Loan (Secretary), Aodh O'Loan Mary Duffy (Treasurer), Denise Copeland

**There are several ways you can help
Sunshine Foundation Romania
(SFR):**

Volunteer – hold a fundraising activity to raise money for SFR

Standing Order - Make a regular donation through a Standing Order. Just complete a form at your bank with your account number and sort code and SFR's account number and sort code details. These are listed on our website.

Text Message - SFR has a Text Donation Service sponsored by Just Text Giving. The service is absolutely free and has no commission fees. Donations can be made in the following amounts; £1, £2, £3, £4, £5, £10. To donate all you have to do is text SFRM00 (followed by the amount) to 70070. If you are a taxpayer, you can make your donation go further through Gift Aid by simply replying to a text.

On Line -You can donate through our new online system sponsored by BT, called MyDonate. Payments are made securely and go direct to SFR. To make an online donation visit our website www.sunshine-foundation.com

If you would like more information on our charitable work please visit our website www.sunshine-foundation.com or email info@sunshine-foundation.com or contact any of our Trustees listed in our SFR Committee webpage.

